

# GREAT MADE GREATER

Introducing the modern QUICKIE 2 ultra lightweight wheelchair. It is all the great adjustability, fit, and dependable performance you love about the QUICKIE 2, made even greater.



**QUICKIE 2**

WITH MODERN  
FEATURES AND  
TECHNOLOGY,  
QUICKIE 2  
EMPOWERS YOU  
WITH MORE  
WAYS THAN  
EVER TO  
CONQUER  
YOUR DAY



## MODERN TECHNOLOGY LIGHTER WEIGHT

The modern QUICKIE 2 brings advanced aesthetics and technology to the folding ultralight wheelchair. 7000 Series Aerospace Aluminum makes the re-designed crossbrace more rigid, stronger, and lighter. The stronger frame results in an increased weight capacity of 300 lbs, while the overall weight is reduced. The incredibly versatile axle plate along with the modern wheels, caster housing, and upholstery, provide you with a great-looking, easy-handling, and even more lightweight folding chair.

## ENDLESS OPTIONS CUSTOM FIT

The QUICKIE 2 is customized to your individual angles and measurements. The modular frame and interchangeable components can change with you as your body and environment change. Choose from over 1,000 configurations of components. You can also choose the hemi frame, depth-adjustable back, angle-adjustable back, or the QUICKIE Xtender™ Power Assist for extra push. With more selection of features and more customized measurements, the QUICKIE 2 is built to be an extension of you.



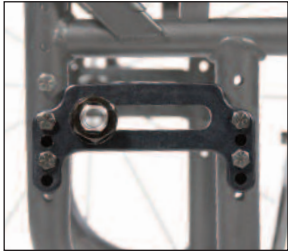
### Topolino Wheels

Topolino Carbon Core Wheels bring a high performance and light weight (2.5 lbs per pair) wheel option to the Quickie 2.



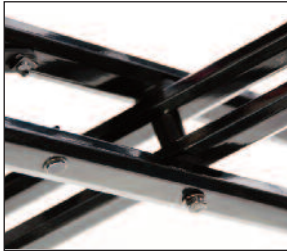
### EXO Tension Adjustable Back Upholstery

Modern, lightweight, and comfortable. Offered with or without tension adjustability, the EXO provides optimal positioning and simple adjustment.



### Versatile Axle Plate

The reversible axle plate allows for exceptional adjustability and options, with fewer parts.



### Light & Durable Crossbrace

Made with 7000 Series Aerospace Aluminum, the diamond-shape crossbrace arms are engineered for strength and greater rigidity, all while reducing weight.



### 300 lb. Weight Capacity

QUICKIE engineering has developed a time-tested frame with the durability of a 300 lb weight capacity, all while reducing overall chair weight.

### Height Adjustable Push Handles

Easy height adjustment without added hardware or receivers. The push handle is designed for an easier push, while the folding design allows easy stowage.

### Integral Caster Housing

The optional Q2 caster housing (standard on Q2 Lite) combines durability and adjustability with sleek styling.





## Q-FIT™ TECHNOLOGY

The QUICKIE 2 uses Q-Fit Technology to create a tight fit between components for a snug, out-of-the-box feel over the lifetime of the wheelchair. Living springs in the side guards and padded swing-away arms eliminate wiggle and rattling, while reversible seat saddles lock the seat rails in place for a smooth, rigid ride.

QUICKIE 2 LITE



## Q2 LITE & Q2 HP OPTIONS

The QUICKIE 2's minimalist counterpart, the QUICKIE 2 Lite, features an extremely lightweight, modular frame with a rounded rear for unique style and either fixed or swing-away front hangers.

The QUICKIE 2 HP™ or High Performance, was built for an active user looking for the most rigid ride available from a folding frame.

1. **Standard Weight:** 16" x 16" standard configuration, with wheels, hangers, composite footplates, and padded swing-away hanger.

**Transport Weight:** 16" x 16" standard configuration, without rear wheels or footrests.

2. Conforms with ANSI/RESNA WC-19 standards. Please refer to Quickie® & Zippie® WC-19 Transit Securement Supplement (MK-100072) for additional information. Supplement is available for download at [www.SunriseMedical.com](http://www.SunriseMedical.com)

## QUICKIE 2 SPECS

**HCPCS Code:** K0005

**Overall Weight<sup>1</sup>**  
25.4 lbs

**Transport Weight<sup>1</sup>**  
13.6 lbs

**Weight Capacity**  
Standard: 300 lbs  
Heavy Duty: 350 lbs

**Seat Width**  
12" to 22"

**Seat Depth**  
12" to 20"

**Back Angle Adjustment**  
Fore (-) 3° to Aft (+) 15°

**Front Seat Height**  
13.5" to 22"

**Rear Seat Height**  
13" to 22"

**Hanger Angle**  
60°, 70°, 80°, 90°

**Transit Approved: Yes<sup>2</sup>**

**Warranty**  
Limited/Lifetime



©02.2017 Sunrise Medical (US) LLC  
MK-100079 Rev. B

800.333.4000 [www.SunriseMedical.com](http://www.SunriseMedical.com)

