




JAY®



Signature
SERIES



The most elite
of JAY's superior
clinical seating.

Superior Clinical Seating

A Legacy of Science, Design, and Quality

Since 1983, JAY has engineered products that provide the optimal combination of support, comfort and protection through progressive design and advanced materials. As industry pioneers, we have commissioned multiple scientific studies, worked with top researchers, and tested our products to exceed industry standards. JAY combines science, technology and design to provide **superior clinical seating.**



The JAY Signature Series products are the very best of over 35 years of research and customer feedback...the most elite offered by JAY.

JAY® DESIGN

JAY Flow® Fluid

In 1983, founder Rick Jay introduced the first ever wheelchair cushion to utilize the pressure-equalizing benefits of fluid.

Foam Base

JAY cushions incorporate a stable foam base, constructed from the highest quality materials and therapeutic foam densities, then contoured to offload pressure and provide support.

Anthropometric Design

JAY pioneered using anthropometric data – measurements of the size and proportions of the human body – to perfect seating contours, shapes, and dimensions.

Clinical Advisory Board

JAY utilizes an elite group of clinicians, specialized in wheelchair seating, to review, critique, and assist in developing the best products for clinical effectiveness.

Cover Technology

JAY offers dual cover technology. Water-resistant inner covers utilize AquaGuard® zippers and anti-wicking thread. Outer covers feature top-quality stretch, airflow, and anti-microbial materials.

JAY CryoFluid™

JAY is the first in the wheelchair industry to develop the patent-pending fluid that actively cools the seating surface.

JAY Testing

JAY products undergo rigorous testing that exceeds industry standards. JAY maintains a satisfaction rate of over 99%.

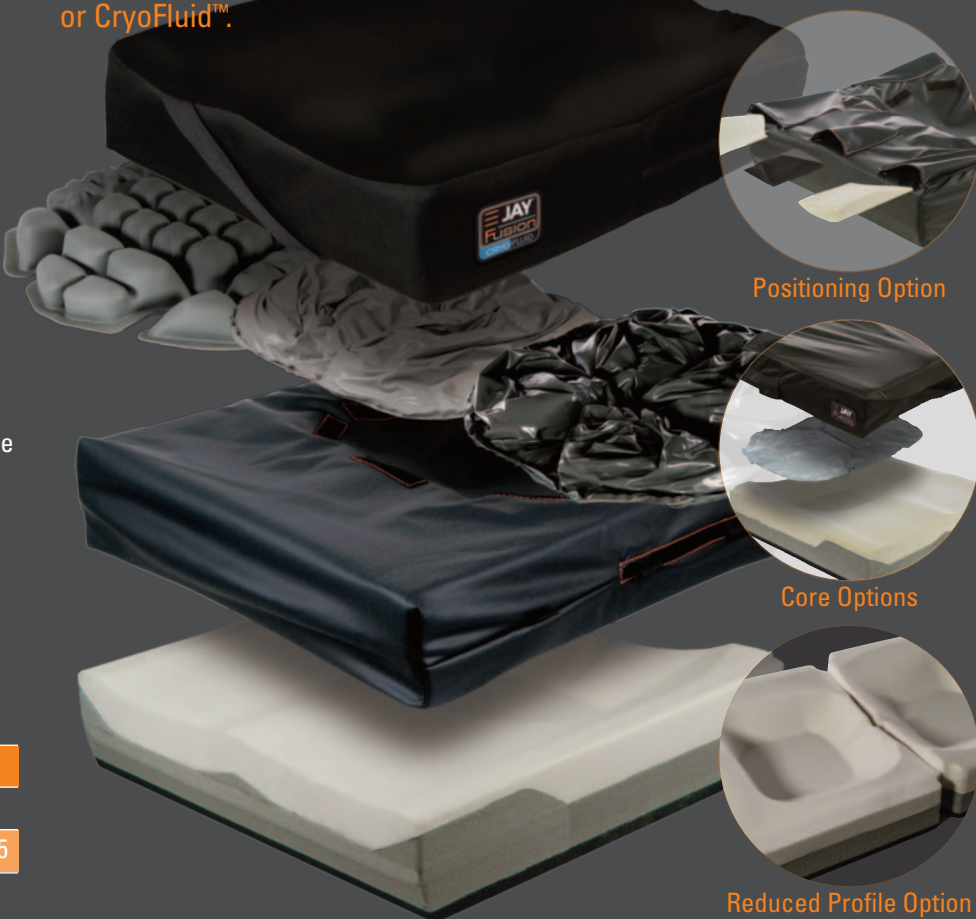


FUSION®

What makes the Fusion unique?

- Contoured base constructed from closed cell foam allows modifications for unique needs
- Soft, contoured top layer offers additional positioning and comfort
- Well width determined by anthropometric data to accommodate the majority of individuals
- Option of JAY Flow® fluid tripad or air insert, providing skin protection
- Option of JAY CryoFluid™ insert to actively cool the seating surface while providing skin protection
- Two profiles available: standard and reduced profile
- Three cover options: Stretch, Reverse Dartex, and 3DX Microclimatic

The JAY Fusion® cushion provides our highest level of stability and skin protection with your choice of JAY Flow® Fluid, air insert, or CryoFluid™.



| | |
|----------------------|-----|
| Lateral Stability: | 5 |
| Forward Stability: | 4 5 |
| Pressure Management: | 4.5 |

Common Client Characteristics

- History of skin breakdown
- May not be able to perform independent weight shifts
- Positioning requirements may change over time
- Uses a wheelchair for extended periods of time throughout the day

Technical Specifications

| | |
|-----------------|--|
| HCPCS Code | E2622/E2623/E2624/E2625 |
| Width Range | 14" to 24" |
| Depth Range | 14" to 24" |
| Height | 4" Standard and Core 3-3/8" with Reduced Profile Option 5" with Positioning Option |
| Weight Capacity | 300 lbs (14-21" widths) 500 lbs (22-24" widths) |

J2® Series

What makes the J2 unique?

- Contoured base constructed from closed cell foam allows modifications for unique needs
- Extensive selection of positioning components provide exceptional side-to-side and forward stability
- Zero-maintenance JAY Flow® fluid tripod conforms to each individual's shape and adjusts to sitting positions for superior pressure distribution
- **DEEP CONTOUR OPTION:** The J2 Deep Contour features a 3" deep well and a JAY Flow® fluid tripod with increased fluid volume for a higher level of stability and skin protection

J2

| | | | |
|----------------------|-----|---|---|
| Lateral Stability: | 4 | 5 | |
| Forward Stability: | 3 | 4 | 5 |
| Pressure Management: | 4.5 | | |

J2 Deep Contour

| | | |
|----------------------|---|---|
| Lateral Stability: | 4 | 5 |
| Forward Stability: | 4 | 5 |
| Pressure Management: | 5 | |

The JAY® J2® is a contoured foam cushion that features JAY Flow® fluid and an easy-to-modify base for skin protection and stability.



Common Client Characteristics

- History of skin breakdown
- May not be able to perform independent weight shifts
- Positioning requirements may change over time
- Uses a wheelchair for extended periods of time throughout the day

Technical Specifications

| | |
|-----------------|--|
| HCPCS Code | E2622/E2623/ E2624/E2625 |
| Width Range | 14" to 24" |
| Depth Range | 14" to 20" |
| Height | J2: 2.5" J2 DC: 4.5" |
| Weight Capacity | 300 lbs 14" to 21" 500 lbs 22" to 24" |

X2®

What makes the X2 unique?

- Non-contoured foam base allows comfortable sitting at the front of the cushion during daily activities
- Removable 1" thigh supports provide side-to-side stability
- Zero-maintenance JAY Flow® fluid insert conforms to each individual's shape for superior pressure distribution
- Innovative dual cover system – water-resistant inner cover with machine-washable outer cover

| | | | | |
|----------------------|---|---|---|---|
| Lateral Stability: | 3 | 4 | 5 | |
| Forward Stability: | 2 | 3 | 4 | 5 |
| Pressure Management: | 4 | 5 | | |

The JAY® X2® is a lightweight cushion designed for active individuals at moderate to high risk of skin breakdown, who require mild to moderate positioning.



Common Client Characteristics

- History of skin breakdown, or impaired/absent sensation and/or protruding bony prominences on the sitting surfaces
- Ability to shift weight while sitting in a wheelchair
- Would benefit from extra positioning or stability
- Uses a wheelchair for extended periods of time throughout the day

Technical Specifications

| | |
|-----------------|------------|
| HCPCS Code | E2622 |
| Width Range | 14" to 20" |
| Depth Range | 14" to 20" |
| Height | 2.25" |
| Weight Capacity | 300 lbs |

UNION®

The JAY Union® is a versatile and comfortable cushion with a dynamic fluid and foam layering system for skin protection and stability.

What makes the Union unique?

- Contoured foam base with 1" lateral pelvic supports that offer superior positioning and stability
- MemGel® Swirl memory foam top layers
- JAY Flow® fluid insert beneath MemGel® foam conforms to each individual's shape for superior pressure distribution
- Innovative dual cover system



| | | |
|----------------------|-----|---|
| Lateral Stability: | 4 | 5 |
| Forward Stability: | 4 | 5 |
| Pressure Management: | 3.5 | 5 |

Common Client Characteristics

- History of skin breakdown, or impaired/absent sensation and/or protruding bony prominences on the sitting surfaces
- Ability to shift weight while sitting in a wheelchair
- Would benefit from extra positioning or stability
- Uses a wheelchair for extended periods of time throughout the day

Technical Specifications

| | |
|-----------------|--|
| HCPCS Code | E2607/E2608 |
| Width Range | 14" to 24" |
| Depth Range | 14" to 24" |
| Height | 4.5" (3.5" with Reduced Profile Option) |
| Weight Capacity | 300 lbs (14-21" widths) 500 lbs (22-24" widths) |

ION®

The JAY Ion® is a comfortable, multi-layered foam cushion offering skin protection and stability.

What makes the Ion unique?

- Dual-layered foam base combines structural support and comfort
- Firmness determined by the cushion width – which corresponds with client weight – creates individualized support
- Visco™ memory foam top layer provides maximum comfort
- **PEDIATRIC OPTION:** The JAY Zip® pediatric cushion offers the same level of skin protection and stability as the Ion but features smaller sizes, lower weights, an extra cover, and softer foam for active kids and teens



Pediatric Option: JAY Zip®

| | | | |
|----------------------|---|---|---|
| Lateral Stability: | 3 | 4 | 5 |
| Forward Stability: | 3 | 4 | 5 |
| Pressure Management: | 3 | 4 | 5 |

Common Client Characteristics

- May be at moderate risk of skin breakdown
- May be able to perform independent weight shifts
- May have moderate positioning needs
- May be in a wheelchair for extended periods of time

Technical Specifications

| | JAY Ion |
|-----------------|--|
| HCPCS Code | E2607/E2608 |
| Width Range | 12" to 24" |
| Depth Range | 12" to 24" |
| Height | 4" |
| Weight Capacity | 300 lbs (14-21" widths) 500 lbs (22-24" widths) |

| | JAY Zip |
|-----------------|-----------|
| HCPCS Code | E2607 |
| Width Range | 8" to 16" |
| Depth Range | 8" to 18" |
| Height | 2.75" |
| Weight Capacity | 165 lbs |

J3® Back

What makes the J3 unique?

- Five contour shapes provide individualized lateral stability
- Four support heights and shapes allow you to select the ideal backrest for torso height
- Four hardware options optimized for varying requirements, wheelchair types, and easier installation
- Carbon Fiber option weighs as little as 2.2 lbs. with hardware
- Accessories include Whitmyer® headrests, lateral thoracic supports, and the CradleU™ Lateral
- Available in larger sizes with optional lower vanity shell extension
- **PERSONALIZED OPTION:** The J3 Form back is a mix-and-pour contouring system
- **PEDIATRIC OPTION:** The JAY Zip® pediatric back features smaller sizes, lower weights, and contour shapes for active kids and teens

The JAY® J3® backrest product line offers lightweight, adjustable products in a multitude of widths, heights, and contour depths so the back can be fitted to each individual.



Carbon Fiber Option

JAY Your Way
colored shell options

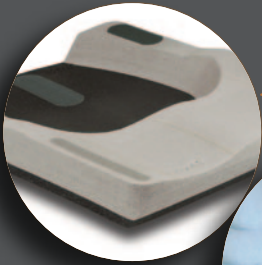
Common Client Characteristics

- Requires posterior pelvic support
- Would benefit from mild to maximum lateral stability
- Would benefit from an open back angle for improved posture and vision
- Needs ability to quickly remove backrest from wheelchair
- Requires a head support, additional positioning, or skin protection along your spine

Technical Specifications

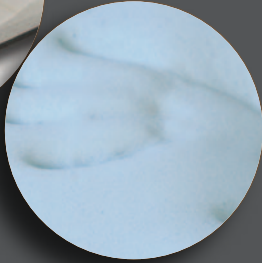
| JAY J3 | | JAY Zip | |
|-----------------|--|-----------------|-----------|
| HCPCS Code | E2613/E2614/ E2615/E2620 | HCPCS Code | E2613 |
| Width Range | 12" to 26" | Width Range | 8" to 14" |
| Height Range | 6.5" to 24" | Height Range | 6" to 12" |
| Weight Capacity | 300 lbs (14-21" widths) 500 lbs (22-24" widths) | Weight Capacity | 165 lbs |

SIGNATURE SERIES TECHNOLOGY



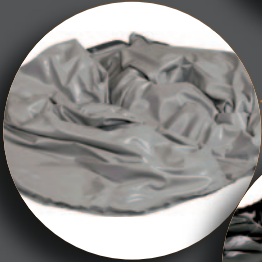
Structural Foam

- Provides side-to-side and forward stability to help promote and maintain proper posture
- Closed cell foam may be cut away to create customer specific shapes



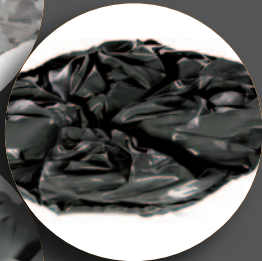
Visco™ Memory Foam

- Conforms to each individual's shape
- Distributes weight over a larger area for pressure reduction
- Provides additional sitting comfort



JAY Flow® Fluid Insert

- Conforms to each individual's shape
- Adjusts to changing sitting positions
- Ensures placement of fluid beneath bony prominences at all times to help protect the skin from breakdown
- Requires zero maintenance



JAY CryoFluid™ Insert

- Actively cools the seated skin surface for up to eight hours
- Evenly distributes pressure, reduces shear and lowers risk of moisture



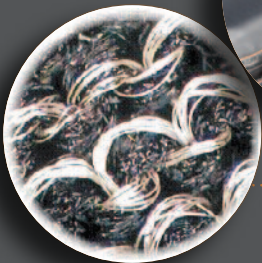
Air Insert

- Adjusts to changing sitting positions
- Air levels may be adjusted at any time to accommodate changing needs and asymmetrical postures
- Available in single or dual valve



Inner Cover with Anti-Wicking Seam Thread and AquaGuard® Zipper

- Water-resistant coating is easy to wipe off and clean
- AquaGuard zipper and anti-wicking seam thread prevent moisture from seeping through zipper teeth and seams, and damaging the foam base



ionic+™ Fabric in Outer Covers

- Silver threads in material naturally inhibit bacterial growth
- 4-way stretch reduces surface tension to prevent skin breakdown

Also available from JAY®

Visit www.SunriseMedical.com for additional JAY® product information.

| Cushions | HCPCS Code | Lateral Stability | | | | | Forward Stability | | | | | Pressure Management | | | | |
|----------------------------------|--------------------------|------------------------------------|---|---|-----|---|---|---|---|---|---|---------------------|---|---|-----|-----|
| JAY® Basic | E2601/E2602 | 1 | 2 | 3 | 4 | 5 | 1 | 2 | 3 | 4 | 5 | 1 | 2 | 3 | 4 | 5 |
| JAY® Basic ^{PRO} ® | E2601/E2602 | 1 | 2 | 3 | 4 | 5 | 1 | 2 | 3 | 4 | 5 | 1 | 2 | 3 | 4 | 5 |
| JAY® GO | E2603/E2604 | 1 | 2 | 3 | 4 | 5 | 1 | 2 | 3 | 4 | 5 | 1 | 2 | 3 | 4 | 5 |
| JAY® Soft Combi™ P | E2605/E2606 | 1 | 2 | 3 | 4 | 5 | 1 | 2 | 3 | 4 | 5 | 1 | 2 | 3 | 4 | 5 |
| JAY® Care | E2607 | 1 | 2 | 3 | 4 | 5 | 1 | 2 | 3 | 4 | 5 | 1 | 2 | 3 | 4 | 5 |
| JAY Zip® | E2607 | 1 | 2 | 3 | 4 | 5 | 1 | 2 | 3 | 4 | 5 | 1 | 2 | 3 | 4 | 5 |
| JAY Ion® | E2607/E2608 | 1 | 2 | 3 | 4 | 5 | 1 | 2 | 3 | 4 | 5 | 1 | 2 | 3 | 4 | 5 |
| JAY Union® | E2607/E2608 | 1 | 2 | 3 | 4 | 5 | 1 | 2 | 3 | 4 | 5 | 1 | 2 | 3 | 3.5 | 5 |
| JAY Easy® | E2607/E2608 | 1 | 2 | 3 | 3.5 | 5 | 1 | 2 | 3 | 4 | 5 | 1 | 2 | 3 | 3.5 | 5 |
| JAY® X2® | E2622 | 1 | 2 | 3 | 4 | 5 | 1 | 2 | 3 | 4 | 5 | 1 | 2 | 3 | 4 | 5 |
| JAY® J2® | E2622/E2623, E2624/E2625 | 1 | 2 | 3 | 4 | 5 | 1 | 2 | 3 | 4 | 5 | 1 | 2 | 3 | 4 | 4.5 |
| JAY® J2® Deep Contour | E2622/E2623, E2624/E2625 | 1 | 2 | 3 | 4 | 5 | 1 | 2 | 3 | 4 | 5 | 1 | 2 | 3 | 4 | 5 |
| JAY Fusion® | E2622/E2623, E2624/E2625 | 1 | 2 | 3 | 4 | 5 | 1 | 2 | 3 | 4 | 5 | 1 | 2 | 3 | 4.5 | 5 |
| JAY Fusion® with CryoFluid™ | E2622/E2623, E2624/E2625 | 1 | 2 | 3 | 4 | 5 | 1 | 2 | 3 | 4 | 5 | 1 | 2 | 3 | 4.5 | 5 |
| JAY J3® | E2622/E2623, E2624/E2625 | 1 | 2 | 3 | 4 | 5 | 1 | 2 | 3 | 4 | 5 | 1 | 2 | 3 | 4 | 5 |
| Specialty Cushions | | | | | | | | | | | | | | | | |
| JAY® Lite | E2603/E2604, E2607/E2608 | 1 | 2 | 3 | 4 | 5 | 1 | 2 | 3 | 4 | 5 | 1 | 2 | 3 | 4 | 5 |
| JAY GS® | E2622, E2624 | 1 | 2 | 3 | 4 | 5 | 1 | 2 | 3 | 4 | 5 | 1 | 2 | 3 | 4 | 5 |
| JAY Duo® | E2603 | 1 | 2 | 3 | 4 | 5 | 1 | 2 | 3 | 4 | 5 | 1 | 2 | 3 | 4 | 5 |
| JAY J2® Plus | K0669 | 1 | 2 | 3 | 4 | 5 | 1 | 2 | 3 | 4 | 5 | 1 | 2 | 3 | 4 | 5 |
| Backs | HCPCS Code | Accommodating Postural Asymmetries | | | | | Modular to Accommodate Evolving Presentations | | | | | Lateral Stability | | | | |
| JAY® GO | E2611/E2612 | 1 | 2 | 3 | 4 | 5 | 1 | 2 | 3 | 4 | 5 | 1 | 2 | 3 | 4 | 5 |
| JAY® Basic | E2611 | 1 | 2 | 3 | 4 | 5 | 1 | 2 | 3 | 4 | 5 | 1 | 2 | 3 | 4 | 5 |
| JAY Zip® | E2613 | 1 | 2 | 3 | 4 | 5 | 1 | 2 | 3 | 4 | 5 | 1 | 2 | 3 | 4 | 5 |
| JAY J3® Posterior | E2613/E2614 | 1 | 2 | 3 | 4 | 5 | 1 | 2 | 3 | 4 | 5 | 1 | 2 | 3 | 4 | 5 |
| JAY J3® Posterior & Lateral | E2615 | 1 | 2 | 3 | 4 | 5 | 1 | 2 | 3 | 4 | 5 | 1 | 2 | 3 | 4 | 5 |
| JAY J3® Posterior Deep | E2620 | 1 | 2 | 3 | 4 | 5 | 1 | 2 | 3 | 4 | 5 | 1 | 2 | 3 | 4 | 5 |
| JAY J3® Posterior & Deep Lateral | E2620 | 1 | 2 | 3 | 4 | 5 | 1 | 2 | 3 | 4 | 5 | 1 | 2 | 3 | 4 | 5 |
| JAY J3® Posterior & Deep Contour | E2620 | 1 | 2 | 3 | 4 | 5 | 1 | 2 | 3 | 4 | 5 | 1 | 2 | 3 | 4 | 5 |
| JAY J3® Plus | E2614 | 1 | 2 | 3 | 4 | 5 | 1 | 2 | 3 | 4 | 5 | 1 | 2 | 3 | 4 | 5 |
| JAY J3® Form | E2617 | 1 | 2 | 3 | 4 | 5 | 1 | 2 | 3 | 4 | 5 | 1 | 2 | 3 | 4 | 5 |

Note on JAY product rating – The “score” per product represents the relative ability of this product to address the clinical indication described. The product comparison charts are for use only to compare JAY product to another JAY product and should not be used to compare other manufacturers’ products. This rating should not be taken as indication of how effective the product will be in addressing any specific user’s requirements. 1 is lowest, 5 is highest.

JAY® YOUR WAY

JAY® Your Way is a modification program designed to deliver the benefits of modified seating with the ease of ordering standard JAY products.

From clinical improvements to colored covers and shells, JAY Your Way modifies cushions and backs specifically to address unique individual needs and preferences.

Common modifications for cushions, fluid inserts, covers, backrests and positioning products can be ordered simply, and most modifications are made at no additional charge.

With JAY Your Way, JAY products are easily modified to meet your clients' needs and individual styles.

