



ORDER FORM

Customer		Ship To	
Account #		Name	
Date		Address	
PO#		City	
Buyer		Province	Postal Code
Mark For		Phone	
Order	Quote	User Weight	

Technical Data Overview

Max. user weight	120 kg	Max. speed forward	6 kph; optional 10 kph or 15 kph
Front frame width	220 – 425 mm ⁽¹⁾	Wheel size	12" pneumatic hybrid tire / 16" pneumatic hybrid tire
Battery weight	2,6 kg	Motor power (max. power)	12" 250 W (630 W) / 16" 250 W (750 W)
Total weight w/o battery	from 12,9 kg ⁽³⁾	Battery type	Li-Ion, 36V, 14 Ah, intelligent battery management system
Total weight with battery	from 15,5 kg ⁽³⁾	Brake type	Twin-brake, system: mechanical disc-brake and separate proportional electric brake Optional Triple-brake, system: dual mechanical brake, and separate electric brake
Charger	36V, 2A	Operating Voltage	36 Volt
Range of action	up to 50km ⁽²⁾	Climbing power	up to 11% (6°)

(1) Measured inside tube to inside tube.

Use only the measured dimension and not the seat width to check compatibility.

(2) According to ISO 7176 - 4, depending on the ground surface, the weight of the user, driving behaviour, temperature and terrain.

(3) Depending on product configuration.

Base			\$
STE010000	StreetJet Power Base		\$7,112.00
STE070092	12 Inch wheel, pneumatic hybrid tire, 250W/630W		STD
STE070093	16 Inch wheel, pneumatic hybrid tire, 250W/750W		\$207.00

Ordering/Bundling			\$
STE090213	Without wheelchair order		STD
STE090217	With wheelchair order, not mounted to the wheelchair ⁽¹⁾		NC

Docking / One-Touch-Docking-Clamps			\$
One-Touch-Docking-Clamps			
STE010053	One Touch Docking Clamps for round tube frames, adjustable diameter 19mm-24mm ⁽²⁾		NC
STE010054	One Touch Docking Clamps for round tube frames, adjustable diameter 25mm-35mm ⁽²⁾		STD
STE010059	One Touch Docking Clamps for oval tubes (Quickie Nitrum) ⁽²⁾		NC

Adjustability			\$
Front Frame width (measured inside front frame tube to inside front frame tube) ⁽³⁾			
STE000160	220mm - 275mm		NC
STE000161	275mm - 330mm		STD
STE000162	330mm - 425mm		NC

Throttle			\$
Throttle lever			
STE000082	Right hand mount (Proportional electrical brake on opposite side)		STD
STE000083	Left hand mount (Proportional electrical brake on opposite side)		NC

Handlebar			\$
STE000163	Narrow 480mm		STD
STE000164	Wide 540mm		NC

Brake			\$
	Proportional electrical brake (on opposite side to the throttle lever)		STD
	Mechanical disc brake Shimano, incl. parking brake function		STD
STE060026	Brake lever right hand mount		STD
STE060027	Brake lever left hand mount		NC
STE060025	Mechanical double disc brake		\$390.00

Speed Setting			\$
STE000025	Speed, max. 6 kph		STD
STE000027	Speed, max. 10 kph		NC
STE000028	Speed, max. 15 kph		NC

Display			\$
	Display: Acceleration Setting, Speedometer, Average Speed, Maximum Speed, Trip Time, Trip Distance, Total Kilometers, State of Charge, Power Consumption		

(1) Wheelchair order on separate order form. Separate shipment of wheelchair and StreetJet.

(2) Always check installation space for the docking clamps before ordering. Depending on configuration and option, a particular configuration of a chair might not offer enough space.

(3) Frame width measured from inside frame tube to inside frame tube at the mounting position.

Use only the measured dimension and not the seat width to check compatibility.

Colours \$

Frame Colour (Fork and main frame)		
RGK100200	Black matte 105	STD
RGK100171	White matte 101	\$100.00
RGK100202	Grey matte 131	\$100.00
RGK100203	Light grey matte 133	\$100.00
RGK100204	Navy blue matte 152	\$100.00
RGK100151	Black gloss 103	\$100.00
RGK100172	White gloss 100	\$100.00
RGK100152	Grey gloss 132	\$100.00
RGK100170	Cream gloss 135	\$100.00
RGK100166	Red gloss 108	\$100.00
RGK100169	Yellow gloss 120	\$100.00
RGK100163	Forest green gloss 143	\$100.00
RGK100161	Green gloss 107	\$100.00
RGK100159	Dark blue gloss 151	\$100.00
RGK100158	Royal blue gloss 154	\$100.00
RGK100156	Blue gloss 174	\$100.00
RGK100160	Duckegg blue gloss 141	\$100.00
RGK100168	Pink gloss 188	\$100.00
RGK100167	Orange gloss 180	\$100.00
RGK100157	Purple gloss 157	\$100.00

Color Kit anodized (stand, central section, One-Touch-Clamps)		
STE100146	Anodized, black	STD
STE100147	Anodized, red	\$194.00
STE100148	Anodized, blue	\$194.00
STE100149	Anodized, purple	\$194.00
STE100173	Anodized, gold	\$194.00

Cable colour (brake cable, docking release cable)		
STE060028	Cables, black	STD
STE060029	Cables, blue	\$77.00
STE060030	Cables, red	\$77.00

Accessories \$

	LED light	STD
	Carbon fender	STD
	Stand, with wheels	STD
STE090087	Additional Battery, Lithium-ion, 14 Ah - 36V	\$1,353.00
STE090189	Luggage rack (in frame colour)	265.00
	Front Frame Protector round tube (only in combination with STE010054 One Touch Docking Clamps for round tube frames, adjustable diameter 25mm-35mm) ⁽³⁾	
STE090190	Frame protector, round tube 19mm	\$291.00
STE090191	Frame protector, round tube 25mm	\$291.00
STE090192	Frame protector, round tube 30mm	\$291.00
STE090194	Frame protector, round tube 32mm	\$291.00
STE090195	Frame protector, oval tube (Nitrum) (only in combination with STE010059 One Touch Docking Clamps for oval tubes (Quickie Nitrum) ⁽³⁾	\$291.00

Empulse StreetJet



// STE070092 12 Inch wheel, pneumatic hybrid tire, 250W/630W

// STE070093 16 Inch wheel, pneumatic hybrid tire, 250W/750W

Docking-clamps



// STE010059 One Touch Docking Clamps for oval tubes (Quickie Nitrum) ⁽²⁾

Accessories



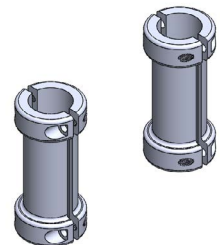
LED light, Carbon fender, discbrake



Stand, with wheels



// STE090189 Luggage rack (in frame colour)



Front Frame Protector (example STE090192). Frame protector, (round tube 30mm)

Brake



// STE060025 Mechanical double disc brake

Colours

Frame Colour (Fork and main frame)



Color Kit anodized (stand, central section, One-Touch-Clamps)



Cable colour (brake cable, docking release cable)



Comments

StreetJet		\$
Base Price		00,000.00
Total Of Additional Equipment		
Packaging And Transport		
Total Price		

Date			Signature
------	--	--	-----------

Day Month Year



Customer Service: (800) 263-3390
Fax: (800) 561-5834
E-mail: cscanada@sunmed.com
www.sunrisemedical.ca
Specifications are subject to change without notice.

© 2025 Sunrise Medical Canada Inc.
1000 Creditstone Road, Unit 2
Concord, ON L4K 4P8

MK-100789-CAN (Rev. 4)